



WALDORF ASTORIA®
DUBAI INTERNATIONAL
FINANCIAL CENTRE

LOCATION

Situated in Dubai International Financial Centre, the most vibrant destination for business, restaurants and the arts.

Located within Burj Daman, a complex featuring residences and office towers, Waldorf Astoria DIFC occupies the 18th to 55th floor of the building.

Acting as the true heartbeat of the hotel, our unique reception is located on the 18th floor, which is also home to the hotel's dining and wellness facilities.



A SOPHISTICATED URBAN LIFESTYLE

The Waldorf Astoria Dubai International Financial Centre is inspired by the architecture of the 1960's, with carefully curated interior designs inspired by a vibrant lifestyle of Via Veneto in Rome and New York's Madison and 5th Avenue.

A Personal Concierge assigned to every guest provides bespoke assistance to every guests personal requirements.

Utterly personal, delivering anticipatory service with intuitive grace, Waldorf Astoria Dubai International Financial Centre aspires guests to live life to the fullest.



LAVISHLY APPOINTED ROOMS & SUITES

All of Waldorf Astoria DIFC's guestrooms, suites and apartments enjoy uninterrupted views of the city via floor-to-ceiling windows in each room.

247 Guestrooms & 46 suites on the 27th to the 50th floor. 28 Residential suites on the 51st to 55th floor.

A Presidential Suite that sprawls over 409 sqm, located on the 49th floor, and offers breathtaking 180-degree vistas of the Dubai skyline.

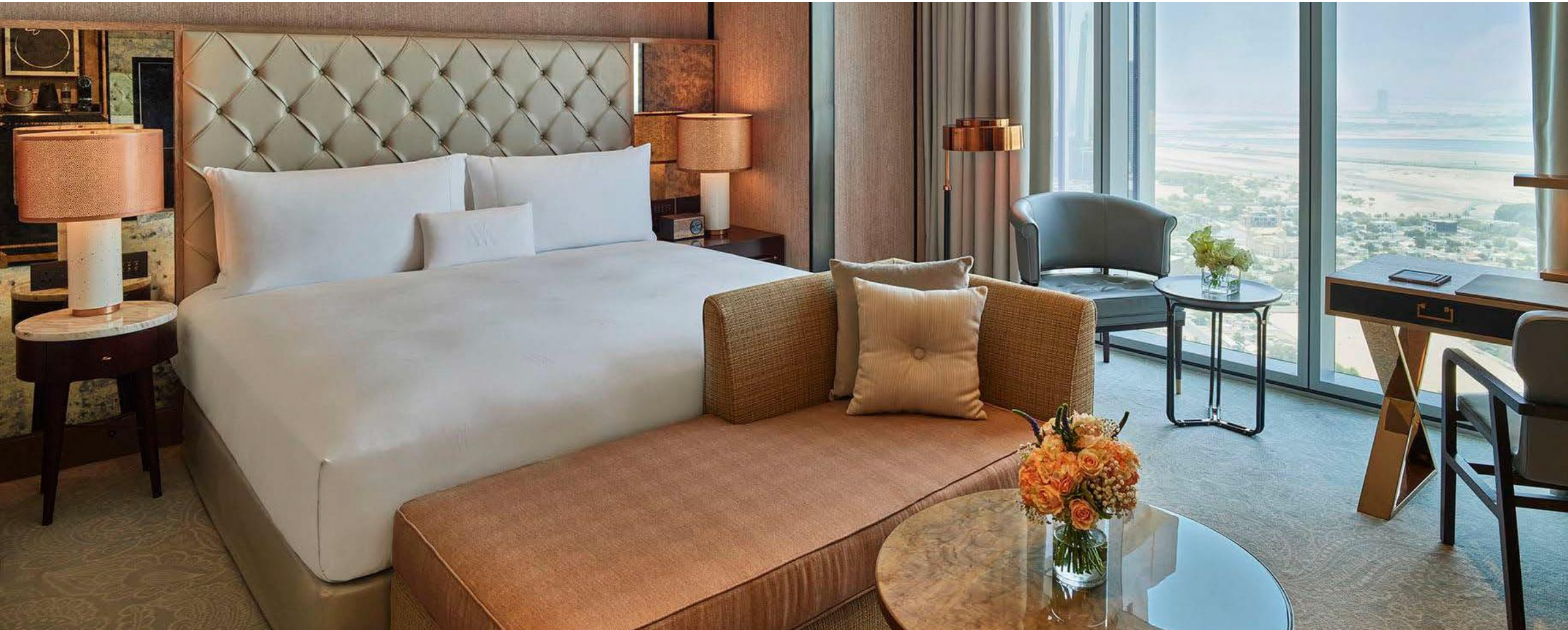




ACCOMODATION

KING DELUXE ROOM

49 SQ. M.
527 SQ. FT.
[VIEW VIRTUAL TOUR](#)



GRAND DELUXE ROOM

56 SQ. M.
602 SQ. FT.
[VIEW VIRTUAL TOUR](#)



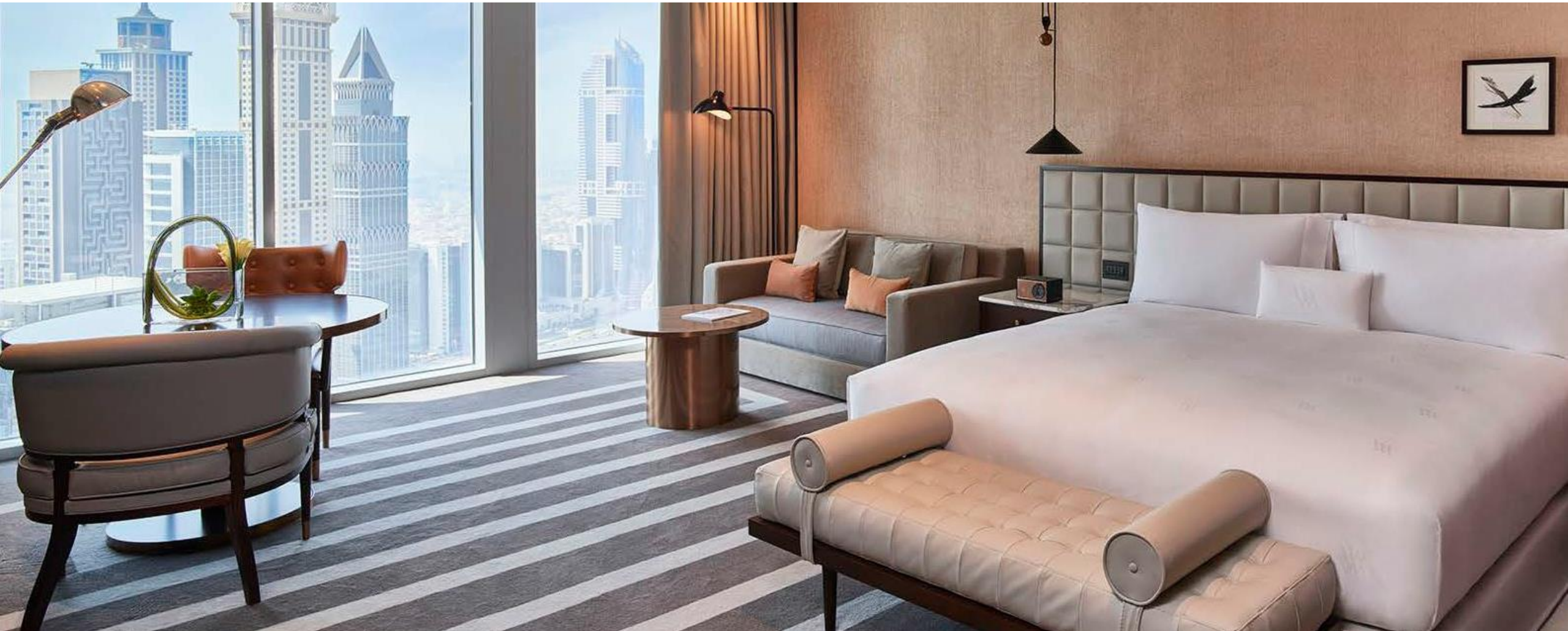
KING CORNER ROOM

58 SQ. M.
624 SQ. FT.
[VIEW VIRTUAL TOUR](#)



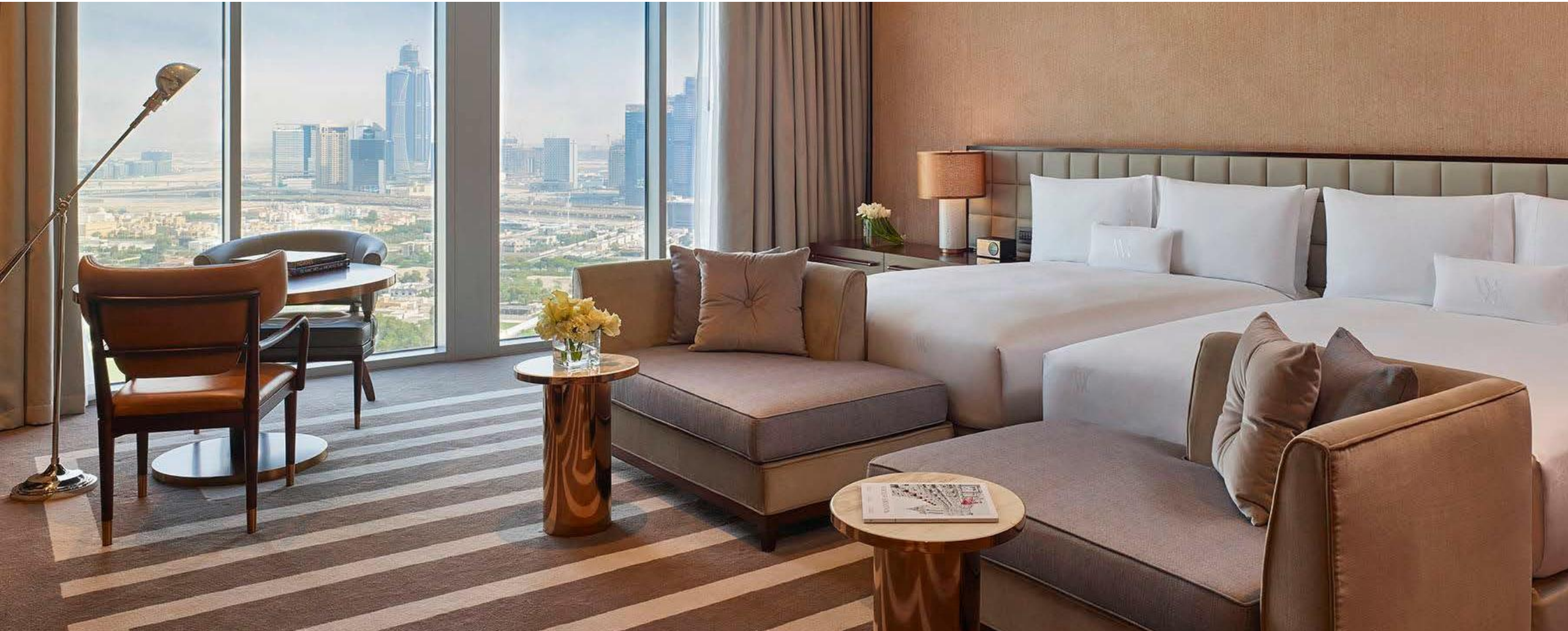
PREMIER ROOM

60 SQ. M.
645 SQ. FT.
[VIEW VIRTUAL TOUR](#)



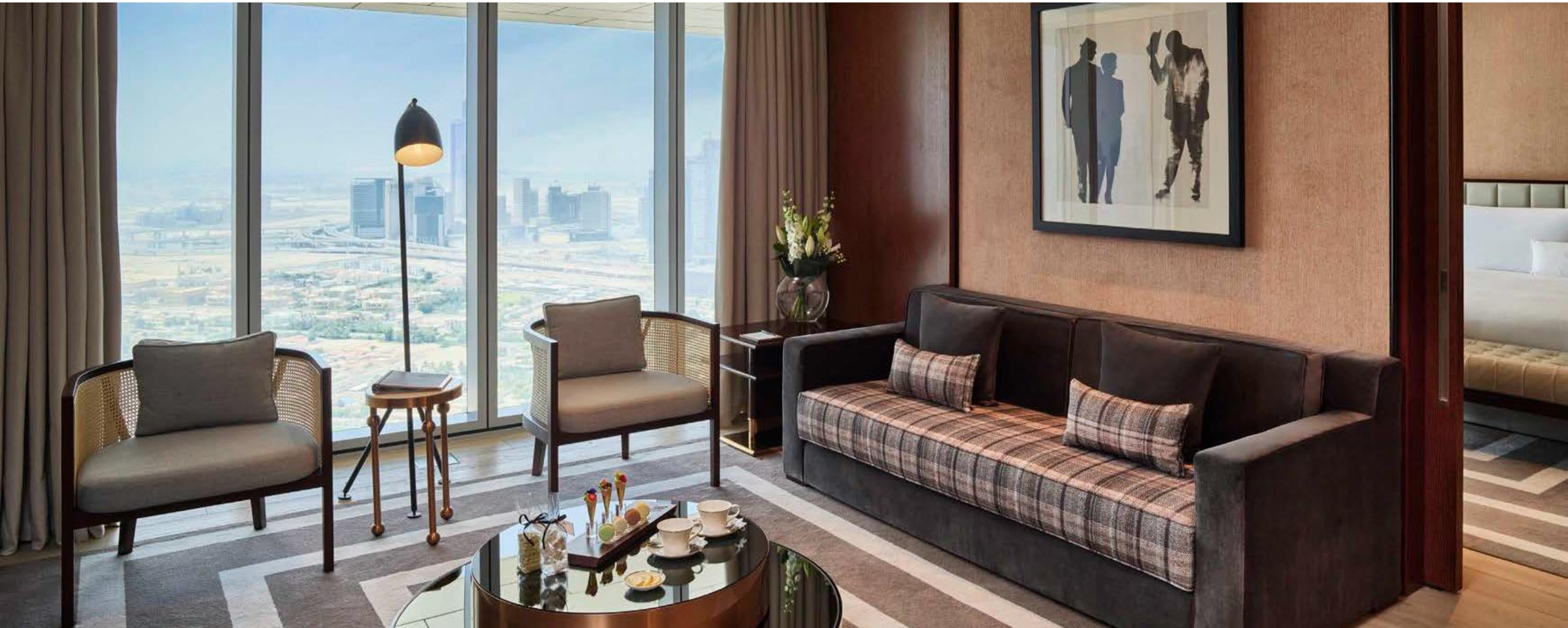
QUEEN PREMIER ROOM

60 SQ. M.
645 SQ. FT.
[VIEW VIRTUAL TOUR](#)



PREMIER SUITE

78 SQ. M.
839 SQ. FT.
[VIEW VIRTUAL TOUR](#)



KING CORNER SUITE

125 SQ. M.
1345 SQ. FT.
[VIEW VIRTUAL TOUR](#)



THE PRESIDENTIAL SUITE

409 SQ. M.
4402 SQ. FT.
[VIEW VIRTUAL TOUR](#)



ONE BEDROOM RESIDENTIAL SUITE

107 SQ. M.
1151 SQ. FT.
[VIEW VIRTUAL TOUR](#)



TWO BEDROOM RESIDENTIAL SUITE

159 SQ. M.
1711 SQ. FT.
[VIEW VIRTUAL TOUR](#)



THREE BEDROOM RESIDENTIAL SUITE

329 SQ. M.
3541 SQ. FT.
[VIEW VIRTUAL TOUR](#)



DINING

UNRIVALLED CULINARY EXPERIENCES

In line with Waldorf Astoria's legacy of culinary expertise, Waldorf Astoria DIFC is primed to be a best-in-class dining destination.

All restaurants and bars are located on the 18th floor, a stunning location from which to view the city.





BULL & BEAR

Inspired by the original once located in the Waldorf Astoria New York, Bull & Bear is the hotel's signature restaurant which offers a twist on the legendary eatery.

Flavor and splendor combined to bring a one-of-a-kind dining experience, you are invited to just sit back and enjoy an array of crafted drinks and impeccable service.

[VIEW VIRTUAL TOUR](#)







An elegant lounge and bar ideal for both sophisticated and informal gatherings.

Indulge in an unforgettable afternoon tea journey with an exclusive selection of sweet and savory bites curated just for you and enhanced by the melodic harmonies of the piano and cello to create a flawless setting for casual meetings and elegant get-togethers.

[VIEW VIRTUAL TOUR](#)







THE CIGAR LOUNGE

Elegant and bespoke experiences await in The Cigar Lounge. The perfect place to relax and unwind for whiskey lovers and cigar connoisseurs alike.

With some of the most renowned and exquisite whiskey and cigar brands from around the world.

Indulge in an all around one-of-a-kind experience you can't compare.

[VIEW VIRTUAL TOUR](#)





ST. TROP

An oasis in the heart of the city, St. Trop serves up a slice of the French Riviera in DIFC.

Revel in some French Riviera vibes at DIFC's most trending rooftop bar.

Enjoy creative mixed drinks and flavorful shishas, while soaking in the dynamic backdrop of Dubai's ever- changing skyline complimented by live entertainment.

[VIEW VIRTUAL TOUR](#)







WELLNESS



The hotel's spa and fitness centre are both secluded on the 18th floor.

The escape begins from the moment you are welcomed into The Spa. Every detail of your surroundings has been designed to foster an air of tranquillity and quiet indulgence, leaving you refreshed and relaxed, both physically and mentally.

Waldorf Astoria Spa. Your haven away from the everyday.

[VIEW VIRTUAL TOUR](#)



GROOMING SUITE

Embark on a memorable wellness journey in our Grooming Suite, a luxury spa treatment space for reflexology, as well as our signature massages and bespoke facials.



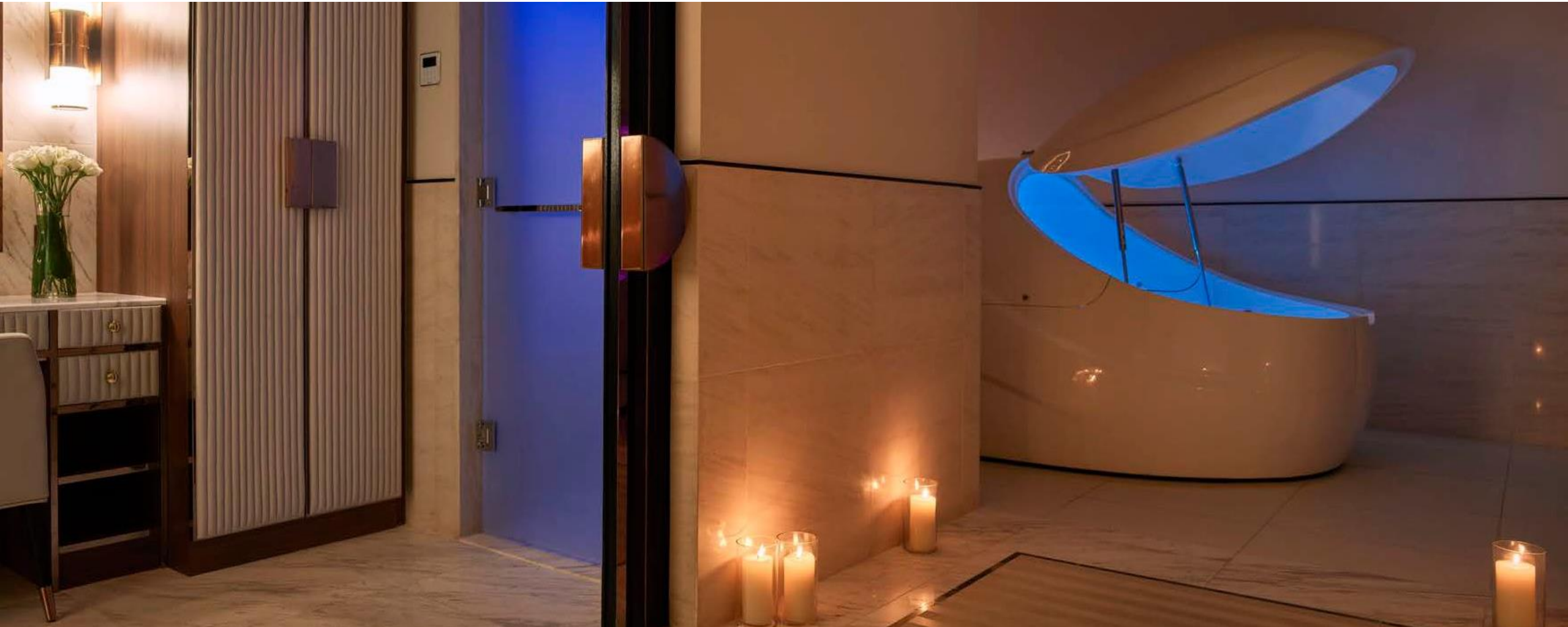
VICHY SUITE

This suite offers a modern Hammam journey on a state-of-the-art heated marble bed, enhanced by a Vichy shower experience like no other.



FLOATATION SUITE

The floatation pod provides a sensory deprivation and weightless experience to encourage relaxation and detoxification.



COUPLES SUITE

This suite includes two unique heated quartz sand massage beds and a therapeutic hydro-therapy bath. The true essence of bliss.



FITNESS CENTER

Stay consistent with your workout regime while you're away from home at our fitness centre, featuring a variety of cardiovascular and weight training machines.



OUTDOOR POOL





MEETINGS & EVENTS

MEETINGS & EVENTS

The hotel offers five elegant, innovative settings, including a unique library concept which houses an open kitchen.

The hotel also features 4 spacious meeting rooms, a grand ballroom with a pre-function area, and a sophisticated boardroom that is perfect for corporate meetings.

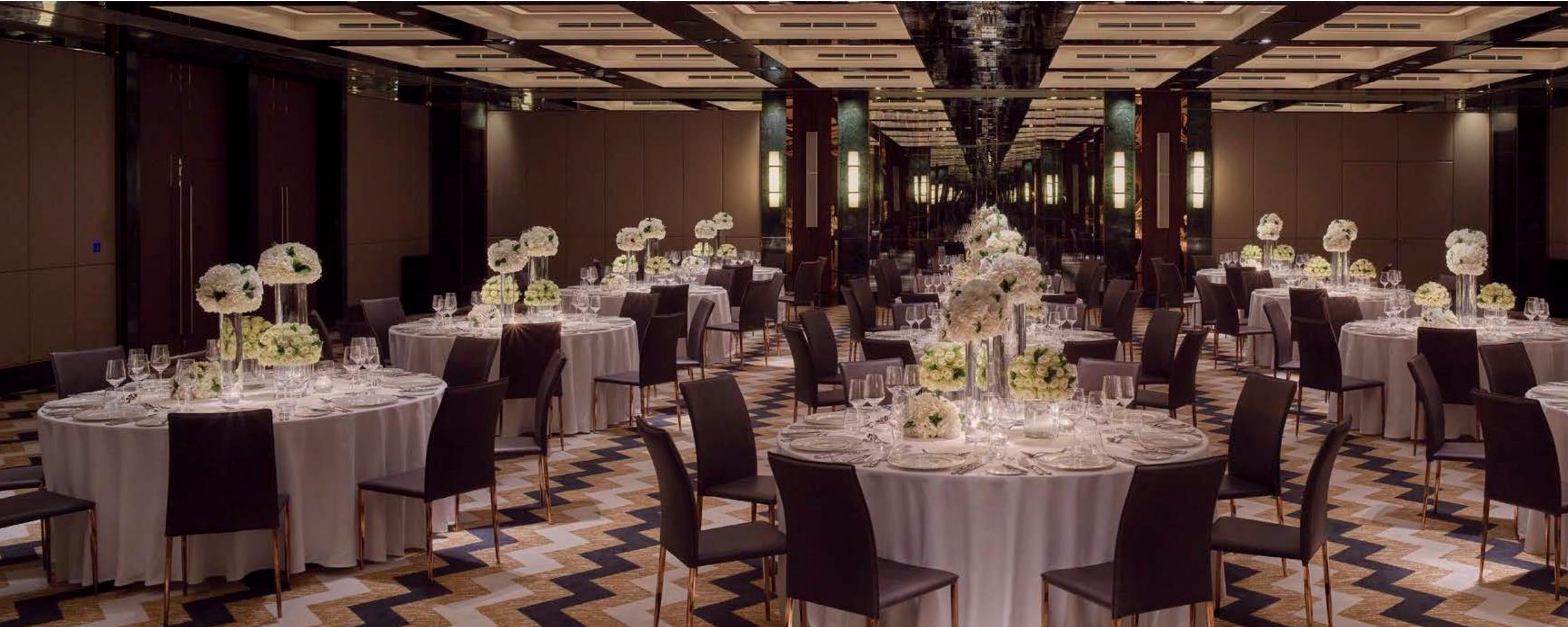
All spaces have a residential, personal feel, providing the ideal setting for every type of event.

Also includes a business centre and a unique library concept with an open kitchen.



NEW YORK

369 SQ. M.
3972 SQ. FT.
[VIEW VIRTUAL TOUR](#)



BERLIN

99 SQ. M.
1066 SQ. F.T.
[VIEW VIRTUAL TOUR](#)



BEVERLY HILLS

75.4 SQ. M.
812 SQ. F.T.
[VIEW VIRTUAL TOUR](#)



ROME

53.5 SQ. M.
576 SQ. F.T.
[VIEW VIRTUAL TOUR](#)



THE LIBRARY

172.8 SQ. M.
1860 SQ. F.T.
[VIEW VIRTUAL TOUR](#)





TRAVEL WITH PURPOSE (HILTON ESG)

TRAVEL WITH PURPOSE

TRAVEL WITH PURPOSE

Travel with Purpose is Hilton's Environmental, Social and Governance (ESG) strategy to drive responsible travel and tourism globally. Through Travel with Purpose, we seek to create positive environmental and social impact across our operations, supply chain, and communities.



E

Environmental

PAVING THE WAY TO NET ZERO

CLIMATE ACTION
DESTINATION STEWARDSHIP



WATTS CARBON/ENERGY

Cut managed portfolio emissions intensity by **75%** by 2030 (1.5°C scenario)

Cut franchised portfolio emissions intensity by **56%** by 2030 (well-below 2°C scenario)

Drive toward a **net-zero** future



WATER

Cut water use by **50%** by 2030



WASTE

Cut waste by **50%** by 2030



S

Social

CREATING AN ENGINE OF OPPORTUNITY

HUMAN RIGHTS
DIVERSITY, EQUITY & INCLUSION



CAREERS

Create **5 million** learning and career growth opportunities for Team Members and communities with a focus on **underrepresented groups** by 2030



Achieve **gender parity** at global leadership levels by 2027



Achieve **ethnic diversity** in 25% of leadership levels in the US by 2027



COMMUNITIES

Meaningfully impact **20 million** community members by 2030



✓ Local Support ✓ Disaster Relief ✓ Economic Opportunities



CONDUCT

Promote **responsible, inclusive conduct** across **100%** of our value chain operations



G

Governance

ADVANCING AND MEASURING OUR GOALS

INTEGRITY
TRANSPARENCY



PUBLIC AFFAIRS

Advocate for public policies that advance our Travel with Purpose goals



PARTNERSHIPS

Create and partner with **cross-industry networks** to advance Travel with Purpose objectives



POLICIES & REPORTING

Operate through **best-in-class** measurement (LightStay), governance and oversight





WALDORF ASTORIA®
DUBAI INTERNATIONAL
FINANCIAL CENTRE

Burj Daman, Al Mustaqbal Street, DIFC, PO Box 507251, Dubai, United Arab Emirates
+971 (0)4 515 9999 | DXBWA.Hotel@waldorfastoria.com | www.waldorfastoria.com/DIFC |   WaldorfDIFC